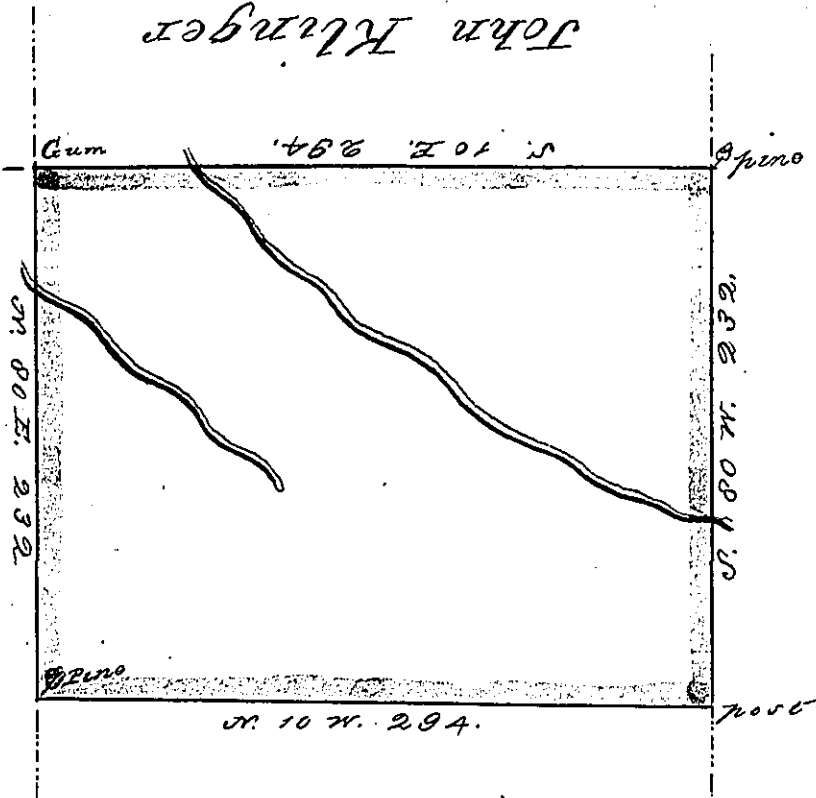


5-145  
John Klingger  
Ann Mary

Christian Travel  
5-12



Mary Witman.

R-224

By virtue of a warrant dated the First day of July 1793 and Survey'd the 10<sup>th</sup> day of the same month and year to John Witman the above described Tract of Land Situate on Prauches of Catawissy on the North Side of Bohony Mountain in Berks County containing Four Hundred and two acres and 27 perches and the allowance of 6 1/2 cent -

Henry Vanderstee -

Joshua Broadhead Esq<sup>r</sup>  
Surveyor General -

IN TESTIMONY that the above is a copy of the original remaining on file in the Department of Internal Affairs of Pennsylvania, made conformably to an Act of Assembly approved the 16th day of February, 1833, I have hereunto set my Hand and caused the Seal of said Department to be affixed at Harrisburg, this

Twenty Sixth day of August 1876

*Wm. C. Candler*  
Secretary of Internal Affairs